



Key Features

- Up to 2-Megapixel 1920x1080 at 30fps
- H.264/MJPEG dual codec
- Fixed Board LENS: f=2.8mm/FOV120°(diagonal)
- Built-in IR for night viewing up to 25 meter
- Mechanical IR Cut Filter for true Day/ Night
- 1T1R WIFI 802.11b/g/n with Ext-Ant.
- EnGenius DDNS, P2P and Push Notification
- IP66 waterproof / Cable Management design
- 802.3af PoE / DC12V power in
- Free iOS & Android APP for view / record
- Free bundle Video Management Software
- ONVIF compatible (Profile S)

2-Megapixel WiFi HD Bullet Network Camera

EnGenius 2-Megapixel WiFi HD Bullet Network Camera: Optimized surveillance system with robust performance and great efficiency

Day/Night HD Surveillance

The EDS5255 is a HDTV 1080p quality with real-time recording at 30fps. It built-in mechanical infrared cut removable (ICR) filter and paired with a powerful IR LED illuminator up to 25 meter range, this IP camera can monitor in complete darkness.

Design for Outdoor

The EDS5255 has a solid metal IP-66 weatherproof housing that protects it from dirt and rain. A 802.3af Power over Ethernet (PoE) allows you to connect the camera to network and power by a single Ethernet cable. A cable management bracket protects cables from damage and provides a simply and clean installation.

EnGeniusDDNS, P2P and Push notifications

The camera free bundle EnGenius DDNS and P2P communication , it is real plug and play. No difficult network/router settings required. When the IP Camera detects movement or sound, a direct notification is send to your smartphone or tablet.

Free Mobile APP and Video Management software

Support for iOS / Android APP allows mobile users to add cam by QR-Code/WIFI-Scan/Router-Search, view cam's live stream, record video and snapshot . The free bundle Video Management Software to help to easily monitor and record on PC.

Physical Interface

1. IR LEDs
2. Built-in LENS
3. Cable Management Bracket
4. External Antenna
5. RJ-45 with 803.2af PoE
6. DC Jack (12V/1A)
7. Reset / WPS / Reboot button



Technical Specifications (HW)

Camera

- Image Sensor:
1/2.7" 2-Megapixel Progressive Scan CMOS
- LENS: Fixed board LENS, f=2.8mm / F1.8
F.O.V: 120°(diagonal)
- Day/Night: Removable IR-cut filter
- Minimum illumination:
Color (IR-off): 0.01Lux / F1.8
B/W (IR-On): 0 Lux / F1.8
- IR illuminator: 12pcs of LEDs, up to 25m range.
- Shutter Time: 1/2.5 sec. to 1/10,000 sec

Video

- Compression: H.264/MJPEG
- Frame rates: up to 30fps at 1920x1080
- Image Settings:
WDR (Wide Dynamic Range) technology, Adjustable image size, quality and bit rate
Brightness, contrast, saturation, sharpness, exposure, Time stamp and text caption overlay
Flip & mirror, AGC/AWB/AES, Day/Night by manual/Auto mode, 2D Noise Reduction, LLC (Low Light Compensation)

Networking

- Network: 10/100 Mbps Ethernet, RJ-45
- PoE: 802.3af class2
- Security: Admin/User account level, Password protection, WEP/WPA/WPA2-PSK
- Protocol: IPv4, TCP, UDP, DHCP, NTP, DNS, DDNS, SMTP, FTP, HTTP, PPPoE, UPnP, NFS/Samba client, QoS/DSCP, RTP, RTSP, 3GPP
- External Antenna Gain: 2Dbi
- ONVIF Compatible (Profile S)
- RF Connector: Reverse SMA plug
- Wireless Interface: IEEE 802.11b/g/n

Alarm and Event / Recording

- Event trigger: Motion/Tamper
- Event Notification: Email/Push-Notification
- Pre-alarm and post-alarm (5 sec)
- Schedule Recording
- Event Actions: File upload to NFS/SAMBA/FTP/SMT/ EnGenius-Cloud & Play Audio
- EnGenius Smart Recording (*the function only available with EnGenius Cloud Router/Gateway)

Physical & Environmental

- Local Storage: N/A
- Power Input: PoE 48V / DC12V/1A
- Dimension (LxWxH): 185x45mm (with bracket)
- Weight: 336g
- Operation Conditions:
Temperature : -20°C ~ 50°C
Humidity : 10% ~ 80%
- Interface (All-in-one cable)
RJ-45 1 x 10/100BASE-T(802.3af PoE)
DC jack (12V/1A)
Reset button
- Certification: CE/FCC/LVD

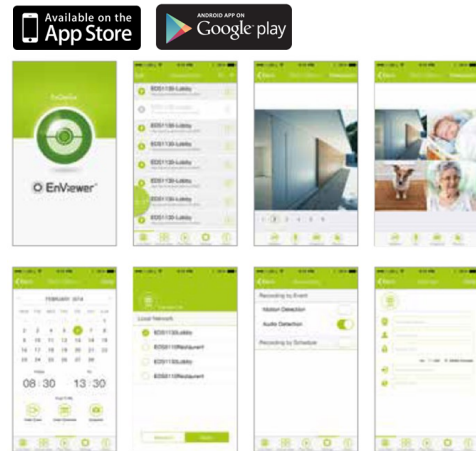
Viewing system requirements

- Operation system: Microsoft Windows XP/2000/Vista/2003/2008/7
- Web browser: IE, Safari, Chrome, Firefox, Opera
- View clients: Live viewing for up to 5 clients

Technical Specifications (SW)

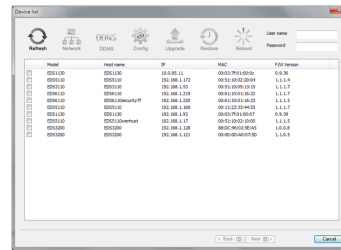
EnViewer (Mobile App.)

- EnViewer Mobile APP: Smart Phone OS (iOS v6.0 / Android v2.3 or above)
- Smart Search (EnGenius Cloud Router/ Gateway Only) / Manual Add (QR Code / Hyperlink)
- Share your camera with your family and friends
- Cam Live View / Group View
- Cam snapshot / Record on APP
- Push Notification / Play Back
- Remote Camera Settings



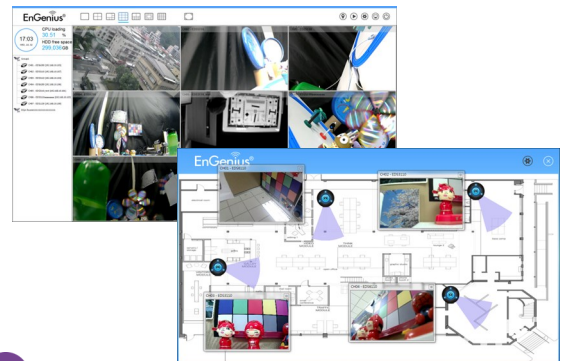
EnViewer Finder by EnGenius

- Support OS: Windows XP/ 2000/ Vista/ 2003 /2008 /7 /8)
- Single / Group camera setting
- Network, uPNP, admin's password setting
- UID/DDNS setting
- Video configuration
- Firmware upgrade
- Restore to default
- Reboot the camera



Video Management Software (VMS)

- Support OS: Windows XP/ 2000/ Vista/ 2003 /2008 /7 /8)
- Free bundle a 16ch recording software
- Support H.264/MPEG4/MJPEG
- Live View, Record and playback
- eMAP with camera icons and mini live view
- Dual monitor management
- Time base search bar on Playback



EnGenius Smart Record

- An individual link and folder will be automatically established when the EnGenius IP Camera is connected to the EnGenius Cloud Router/ Gateway for saving schedule streaming and event message to the USB device attached to the Router. The storage folder name and Camera Name can be modified from the router control page. The storage video will be overwrite by the EnGenius Router/Gateway when the USB device is full.



Current IP-Camera Profile

No.	Name	IP Address	MAC	Recording	Motion	Over-Write	Folder Name	Select
1	Living Room	192.168.1.101	00026F778890	<input checked="" type="checkbox"/>	<input checked="" type="checkbox"/>	<input checked="" type="checkbox"/>	Living	<input type="checkbox"/>

[Edit](#) [Delete Selected](#) [Delete All](#) [Synchronize with IPCAM](#)

USB Available Space

IP Camera Name

Recording

Motion-Detection

Over-Write

Folder Name

[Apply](#) [Cancel](#)

*The "smart record" control page on EnGenius Cloud Router/Gateway web page.

Maximum data rates are based on IEEE 802.11 standards. Actual throughput and range can vary depending on many factors including environmental conditions, distance between devices, radio interference in the operating environment, and mix of devices in the network. Features and specifications subject to change without notice. Trademarks and registered trademarks are the property of their respective owners